



Walking & Cycling Across Victoria Achieving Better Integration

Rayoni Nelson, Acting Manager Physical Activity
Sport and Recreation Victoria
Department of Planning and Community Development



Walking and Cycling in Victoria

- Incorporated in a range of policies / strategies
- Many stakeholders involved in program delivery
- Focus of initiatives include:
 - Infrastructure
 - Education
 - Safety
 - Physical activity
- State-wide and local community level (geographic / demographic)

Benefits of Walking and Cycling

- Health / physical activity
- Recreation
- Environmental
- Transport
- Tourism
- Social

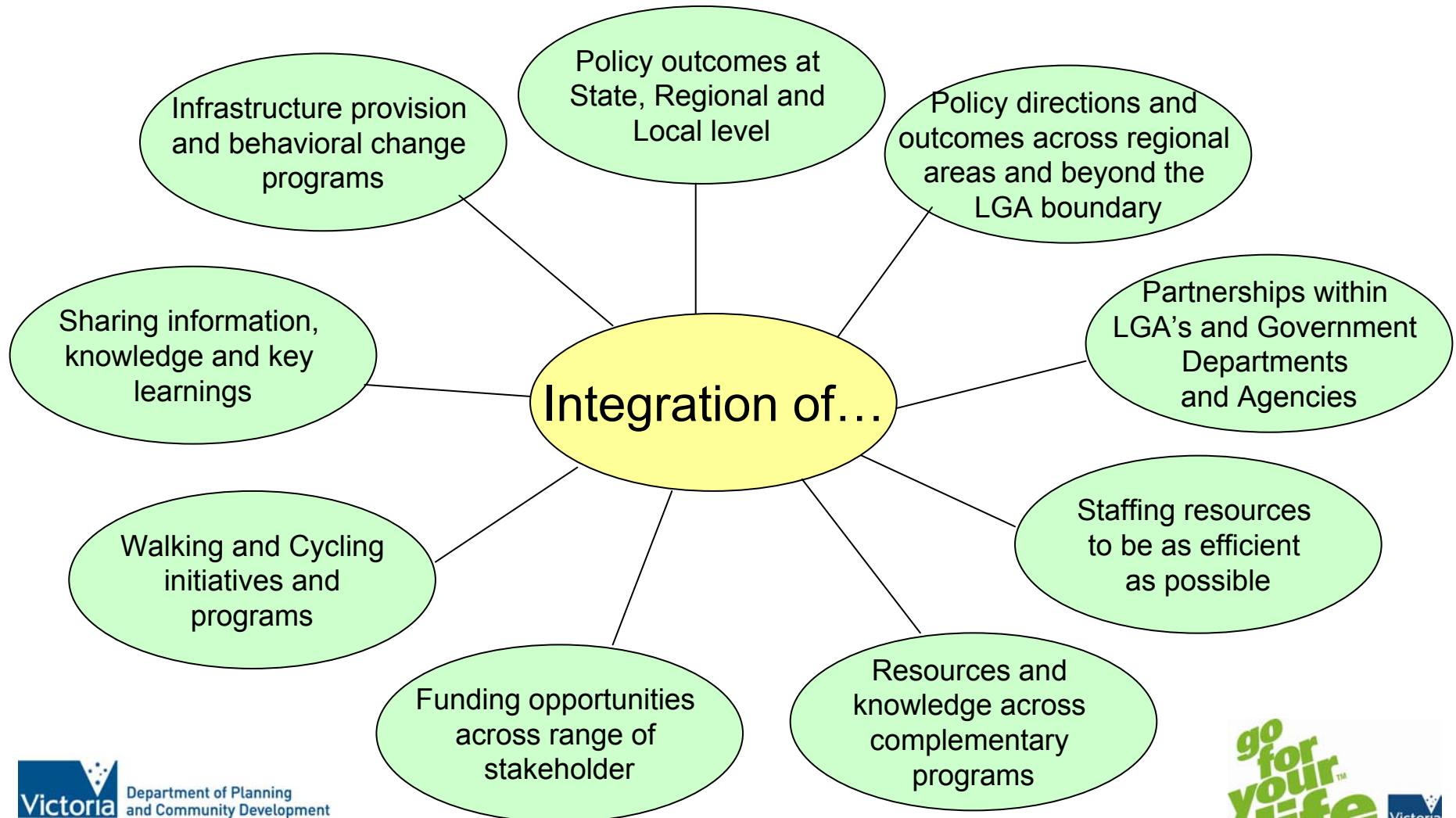


'Go for your life' Integrated Approach to Walking & Cycling

- Working with Government departments and agencies as well as non-Government organisations and peak bodies to develop an integrated approach to walking and cycling across Victoria
- 4 year project
- Project steering committee



What do we mean by integration?





Mapping Project - Scope

- Develop a framework to allow for the thorough documentation of existing policy and programs relevant to walking and cycling
- Audit a range of programs across the Government and non-government sector
- Develop an action plan to guide integration of walking and cycling



Project Stages

- Policy and program audit
 - 72 policies / strategies
 - 56 programs
- Case studies
 - 4 population focus
 - 6 geographic focus
- Stakeholder workshop



Project Stages

- Examples of policies / strategies:
 - Australian National Cycling Strategy 2005-2010
 - *arrive alive!* 2008-2017
 - Victorian Trails Strategy 2005-2010
 - 'Go for your life' Strategic Plan 2006-2010
 - Linking People and Spaces
 - Melbourne 2030
 - Meeting Our Transport Challenges
 - Sample of Local Government strategies eg: Whittlesea Walking Strategy



Project Stages

- Examples of programs:
 - Ride2School
 - Streets Ahead
 - Starting Out Safely
 - Local Area Access Program
 - TravelSmart
 - ‘Go for your life’ Community Walking Grants program
 - Walktober
 - Creating Better Places Program
 - Sustainable Physical Activity in Neighbourhood Renewal



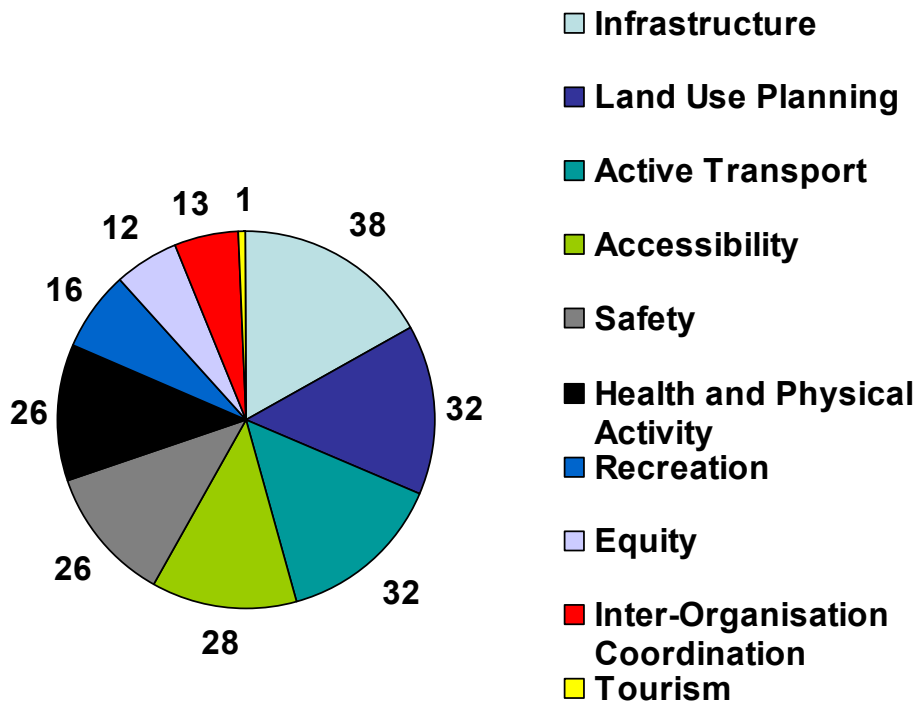
Project Stages

- Case studies – population groups:
 - Ride2School
 - Sustainable Physical Activity in Neighbourhood Renewal
 - Local Access Area Program
 - Over 50's Active Living Grants
- Case studies – geographic:
 - City of Port Phillip
 - City of Moreland
 - City of Brimbank
 - City of Greater Geelong
 - City of Greater Bendigo
 - Mornington Peninsula Shire Council

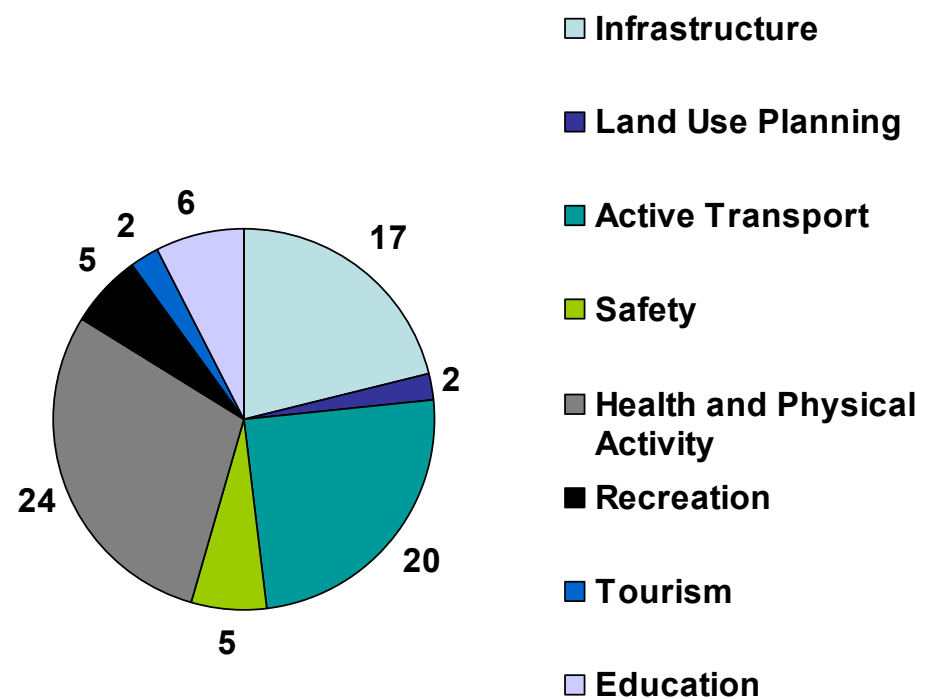


Areas of Policy and Program Focus

Area of Focus - Policy/Strategy



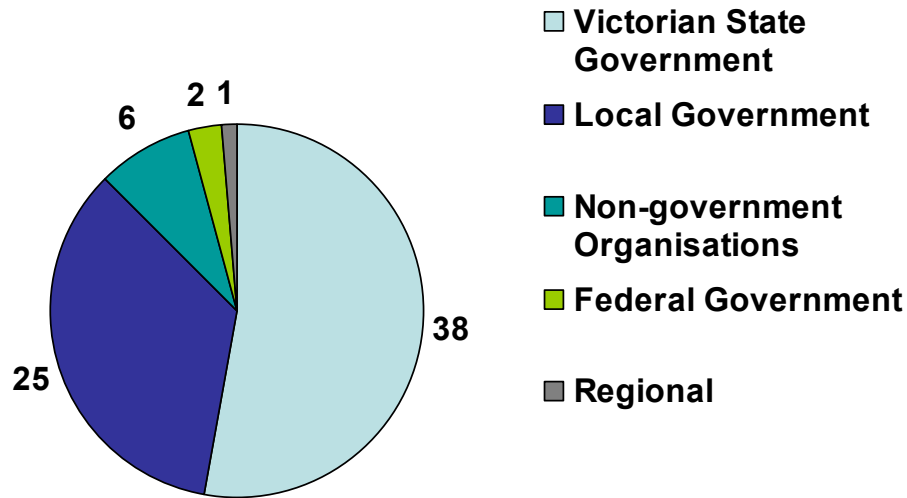
Area of Focus - Program



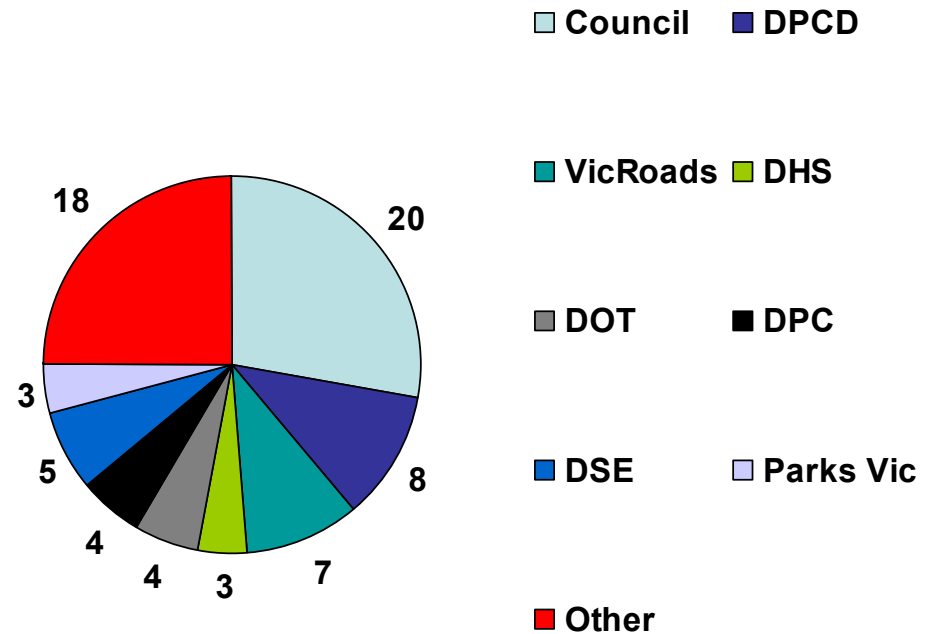


Developers and Implementers of Policy

Developers - Policy/Strategy



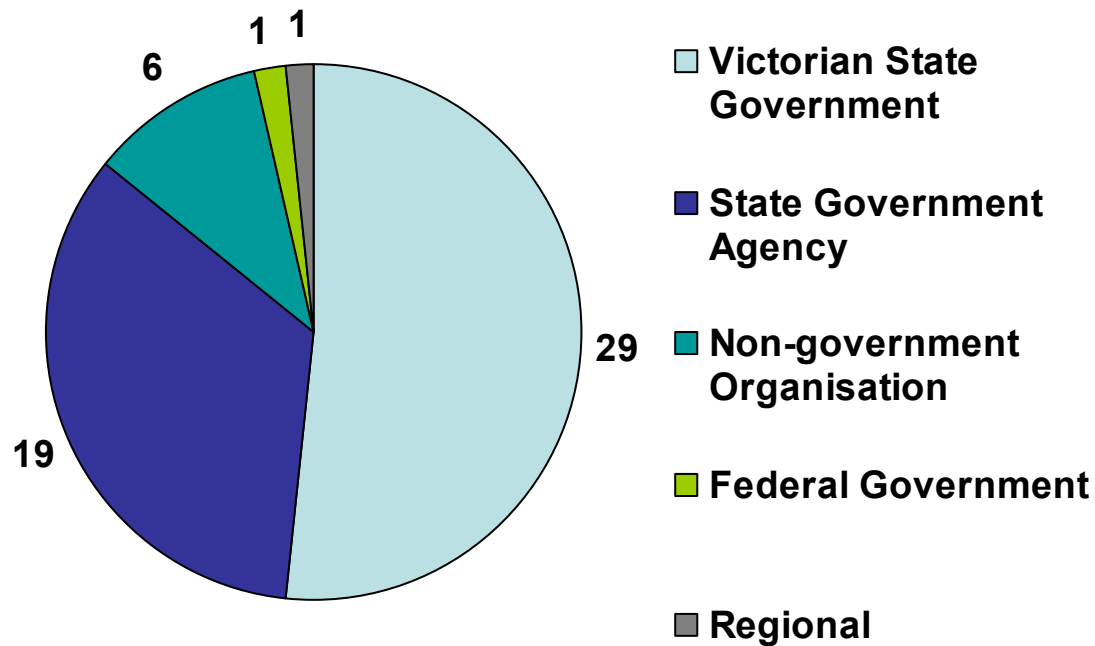
Implementers - Policy/Strategy





Implementers of Programs

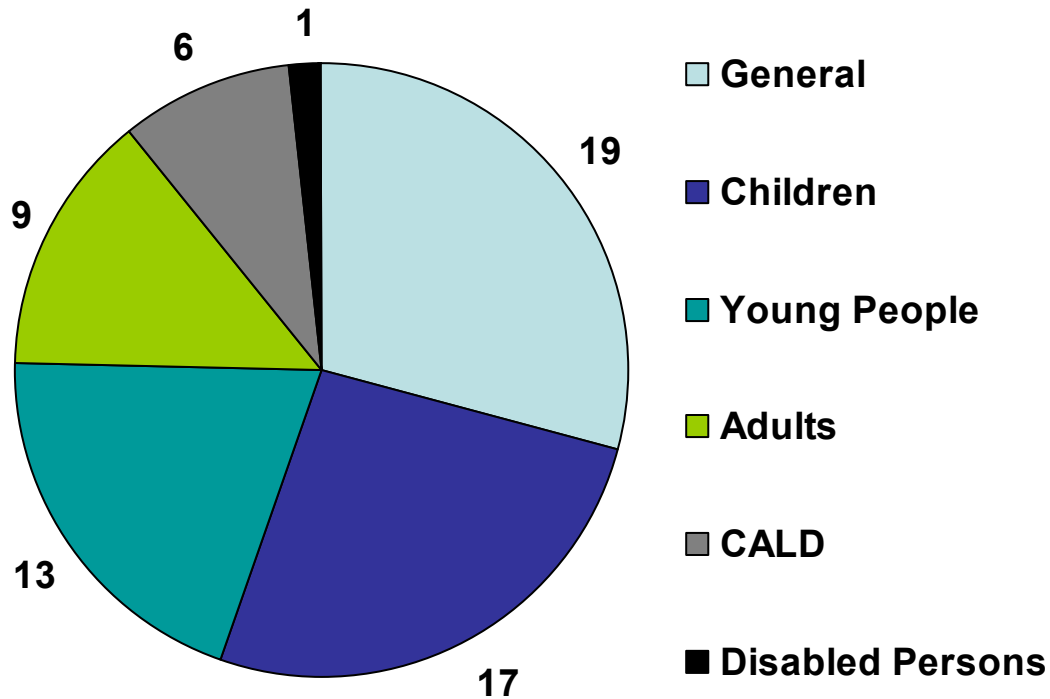
Implementers - Programs





Target Audience of Programs

Target Audience - Programs





Interim Findings

- Wide range of agencies involved in policy development relating to walking and cycling
- Good level of information available on policies, limited on projects
- Most policies have an integrated approach across a range of Government departments
- Large range and number of programs
- Programs range in scale from large budget on going programs to smaller one off programs – also cross a range of target settings
- Most programs have partnership arrangements



Next Steps

- Finalise mapping project:
 - Finalise action plan
- Information sharing:
 - Assist coordination across key organisations
 - Showcase best practice